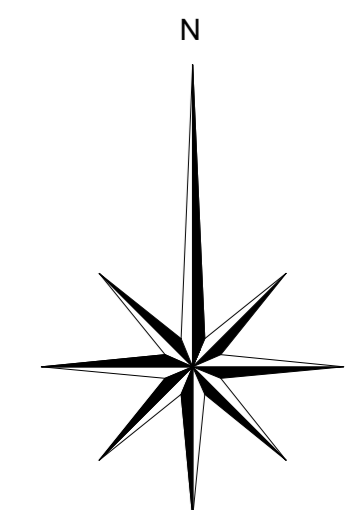
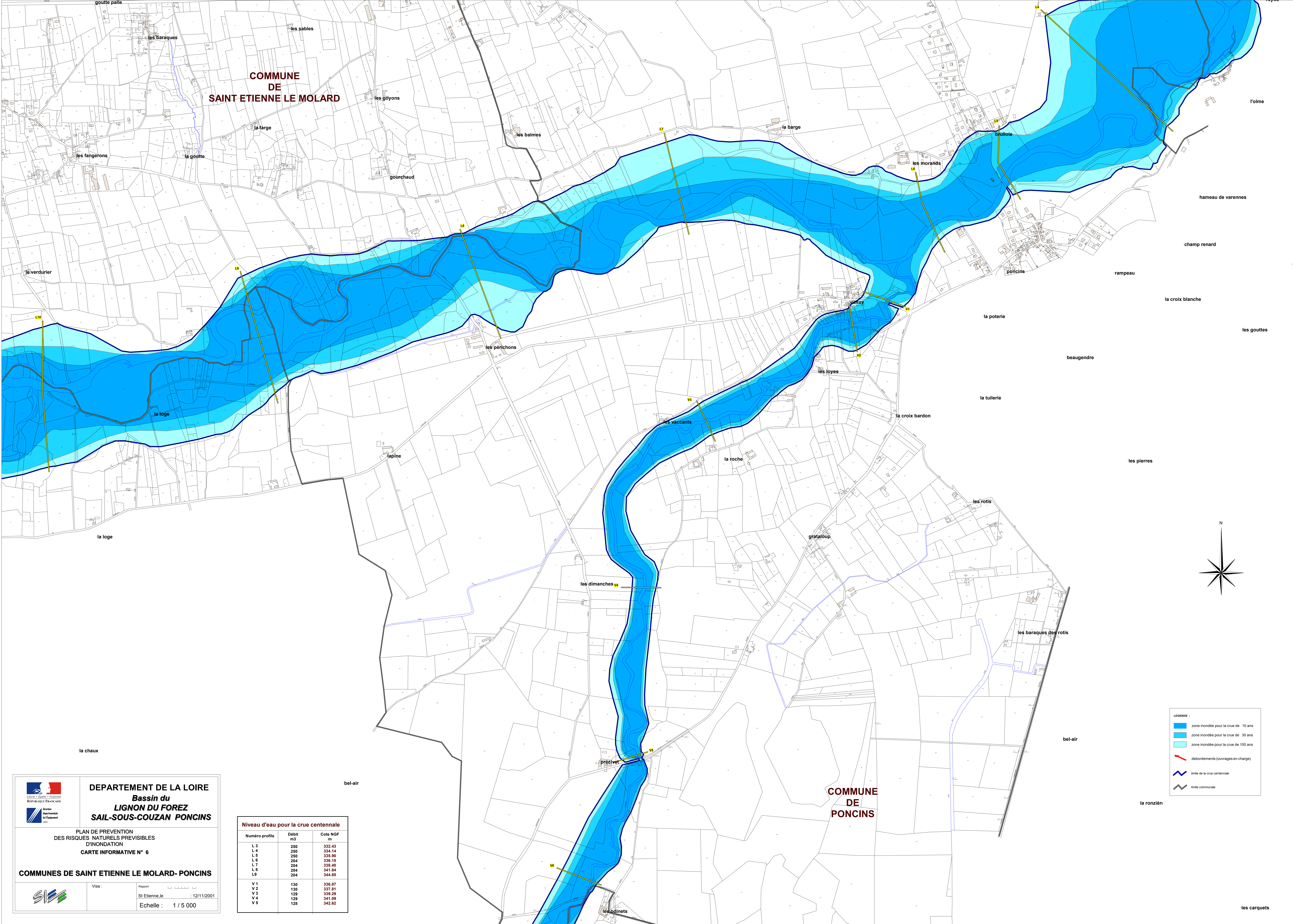








COMMUNE DE SAINT ETIENNE LE MOLARD

COMMUNE DE PONCINS




DEPARTEMENT DE LA LOIRE
Bassin du LIGNON DU FOREZ
SAIL-SOUS-COUZAN PONCINS
 PLAN DE PREVENTION DES RISQUES NATURELS PREVISIBLES D'INONDATION
 CARTE INFORMATIVE N° 6
COMMUNES DE SAINT ETIENNE LE MOLARD- PONCINS
 Visa : _____ Rapport : _____
 St Etienne le 12/11/2001
 Echelle : 1 / 5 000

Niveau d'eau pour la crue centennale		
Numero profil	Debit m ³	Cote NGF m
L 3	250	332.43
L 4	250	334.14
L 5	250	336.90
L 6	204	336.15
L 7	204	338.40
L 8	204	341.64
L 9	204	344.88
V 1	130	336.87
V 2	130	337.81
V 3	129	339.29
V 4	129	341.09
V 5	129	342.62

LEGENDE :
 zone inondée pour la crue de 10 ans
 zone inondée pour la crue de 30 ans
 zone inondée pour la crue de 100 ans
 debordements (ouvrages en charge)
 limite de la crue centennale
 limite communale